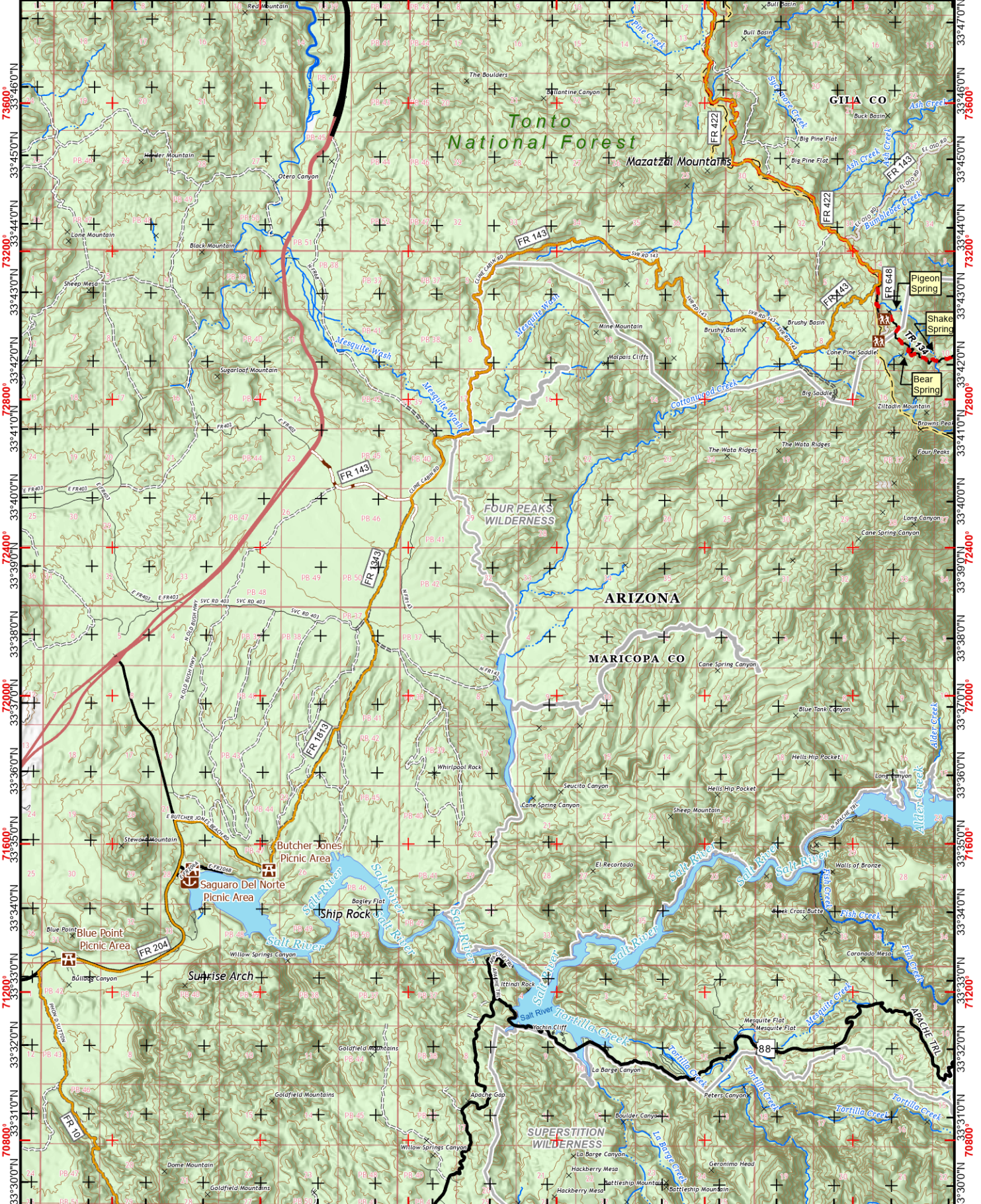








111°35'0"W 111°34'0"W 111°33'0"W 111°32'0"W 111°31'0"W 111°30'0"W 111°29'0"W 111°28'0"W 111°27'0"W 111°26'0"W 111°25'0"W 111°24'0"W 111°23'0"W 111°22'0"W 111°21'0"W 111°20'0"W 111°19'0"W




 Arizona Trail Association  
 738 N. 5th Avenue, Suite 201  
 Tucson, AZ 85705  
 (602) 252-4794 5/1/2022  
 www.aztrail.org  
 Access Map Book.mxd  
 Copyright © 2022

**Mountain Biking**  
**Passage AZT-20**  
**Four Peaks**  
 Lat/Long WGS 84  
 UTM NAD 83 12N  
 Scale: 1:135,000  
 0 0.5 1 2 Miles

-  Arizona Trail (Mt. Bike Alt)
-  Adjacent Passages
-  Interstates
-  Highways
-  Paved Roads
-  Improved Road
-  Unimproved Road
-  4x4 Road
-  National Forest
-  Private

