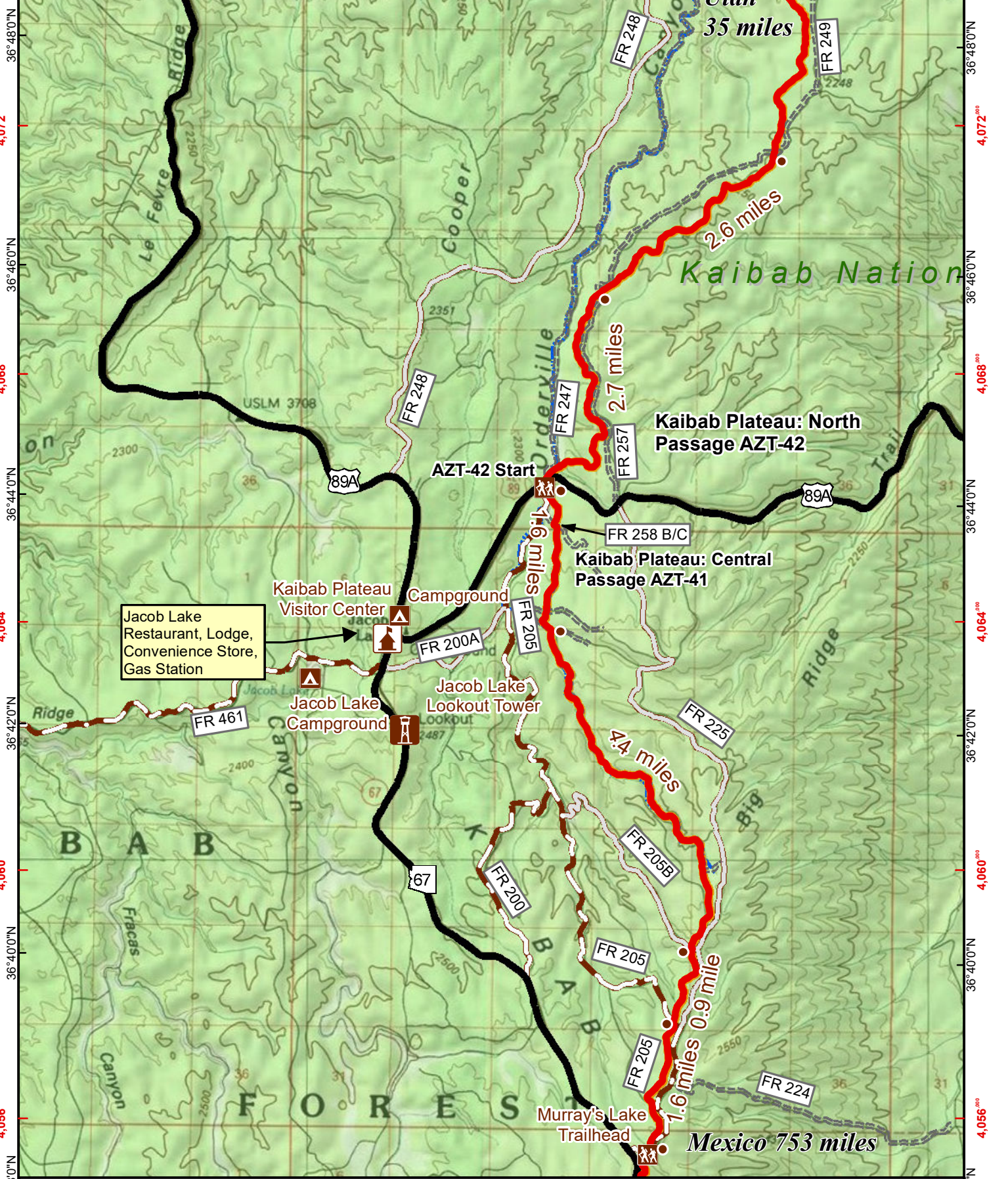


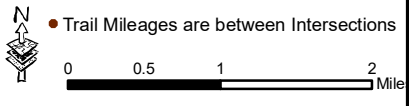
112°16'0"W 388<sup>000</sup> 112°14'0"W 392<sup>000</sup> 112°12'0"W 396<sup>000</sup> 112°10'0"W 396<sup>000</sup> 112°8'0"W 400<sup>000</sup>



Jacob Lake  
Restaurant, Lodge,  
Convenience Store,  
Gas Station

**Arizona Trail near  
Jacob Lake**  
A. Seifert v2.0  
2/21/2017  
Lat/Long WGS 84  
UTM NAD 83 12N  
Scale: 1:80,000

- Trailheads
- AZ Trail
- Other Trails
- Railroad
- Interstates
- Highways
- Paved Roads
- Improved Road
- Unimproved Road
- 4x4 Road
- AZ Trail Mountain Bike Route
- Lake or Pond
- Perennial Stream
- Intermittent Stream



Trail Mileages are between Intersections

36°38'0"N

4,056<sup>000</sup>

4,060<sup>000</sup>

4,064<sup>000</sup>

4,068<sup>000</sup>

4,072<sup>000</sup>

36°38'0"N

4,056<sup>000</sup>

4,060<sup>000</sup>

4,064<sup>000</sup>

4,068<sup>000</sup>

4,072<sup>000</sup>

Utah  
35 miles

Kaibab Nation

Kaibab Plateau: North  
Passage AZT-42

Kaibab Plateau: Central  
Passage AZT-41

Murray's Lake  
Trailhead  
Mexico 753 miles

Le Fevre  
Ridge

Cooper

Orderville

Cooper

Big  
Ridge

Big  
Ridge

Ridge

B A B

F O R E S T

Murray's Lake  
Trailhead

Arizona Trail  
National Scenic Trail