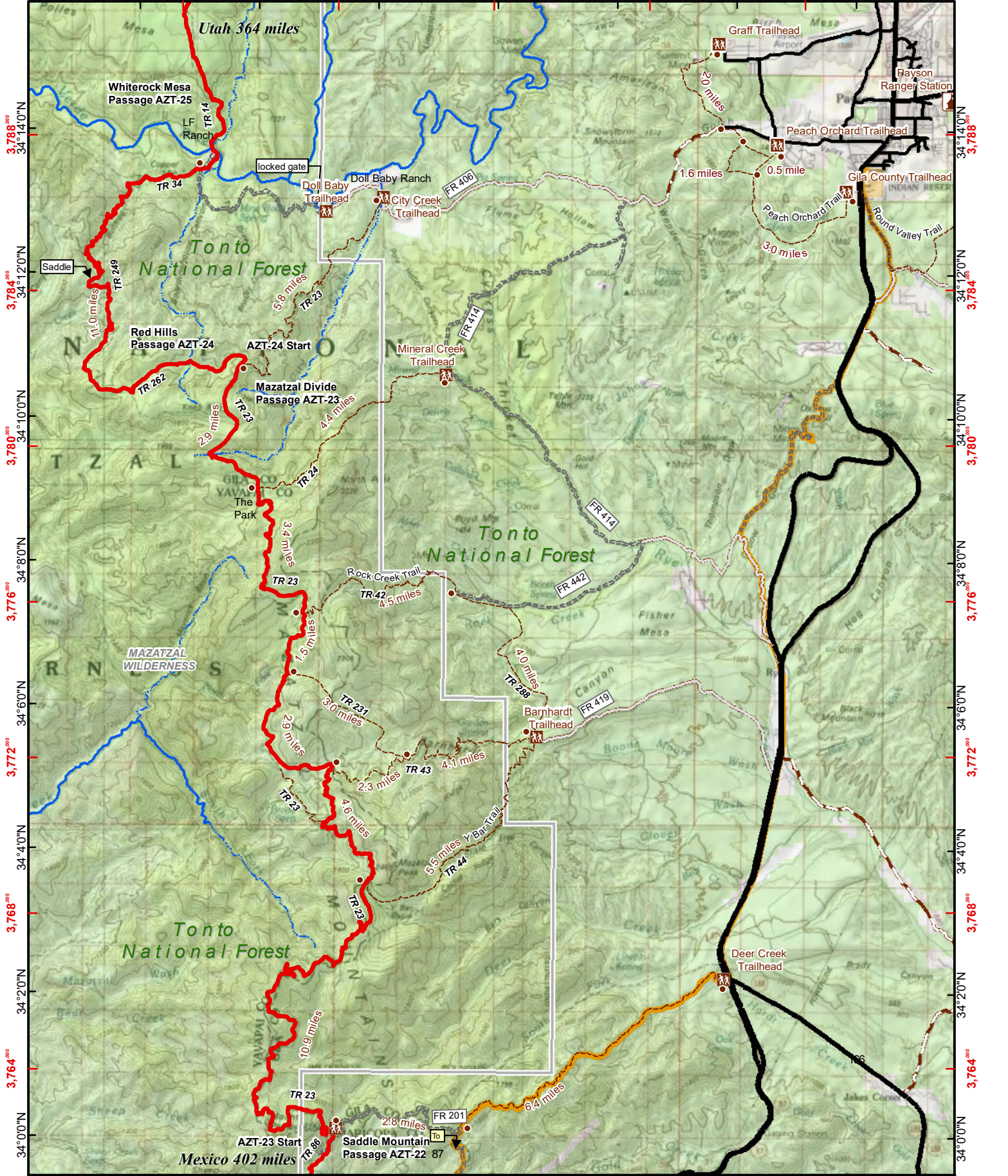


111°32'0"W 452⁰⁰⁰ 111°30'0"W 456⁰⁰⁰ 111°28'0"W 460⁰⁰⁰ 111°26'0"W 464⁰⁰⁰ 111°24'0"W 468⁰⁰⁰ 111°22'0"W 472⁰⁰⁰ 111°20'0"W



Arizona Trail near Payson

A. Seifert v2.0
2/18/2018
Lat/Long WGS 84
UTM NAD 83 12N
Scale: 1:125,000

- Trailheads
- AZ Trail
- Other Trails
- Railroad
- Interstates
- Highways
- Paved Roads
- Improved Road
- Unimproved Road
- 4x4 Road
- AZ Trail Mountain Bike Route
- Lake or Pond
- Perennial Stream
- Intermittent Stream
- Wilderness Boundary

Trail Mileages are between Intersections

3,760⁰⁰⁰

3,764⁰⁰⁰

3,768⁰⁰⁰

3,772⁰⁰⁰

3,776⁰⁰⁰

3,780⁰⁰⁰

3,784⁰⁰⁰

3,788⁰⁰⁰

3,760⁰⁰⁰

3,764⁰⁰⁰

3,768⁰⁰⁰

3,772⁰⁰⁰

3,776⁰⁰⁰

3,780⁰⁰⁰

3,784⁰⁰⁰

3,788⁰⁰⁰